

CEDAR GLEN

The Villas at Greenbrier
A LUXURY CONDOMINIUM

Elevations | Rear Load



Birch

Spruce

Oak

Donna Melzer: (757) 652-0769
Email: HAVSales@HAVinc.com



www.havinc.com



Builder reserves the right to change prices, plan components and specifications and to withdraw any plan without notice. All illustrations are artist's concepts and accuracy is not guaranteed. Room and house dimensions approximate. Extra-cost options may be shown in illustrations. Individual homes may differ from the models or from each other depending on field conditions. June/2024



CEDAR GLEN

The Villas at Greenbrier
A LUXURY CONDOMINIUM

The Birch ELEVATION | Rear Load



Donna Melzer: (757) 652-0769
Email: HAVSales@HAVinc.com



www.havinc.com

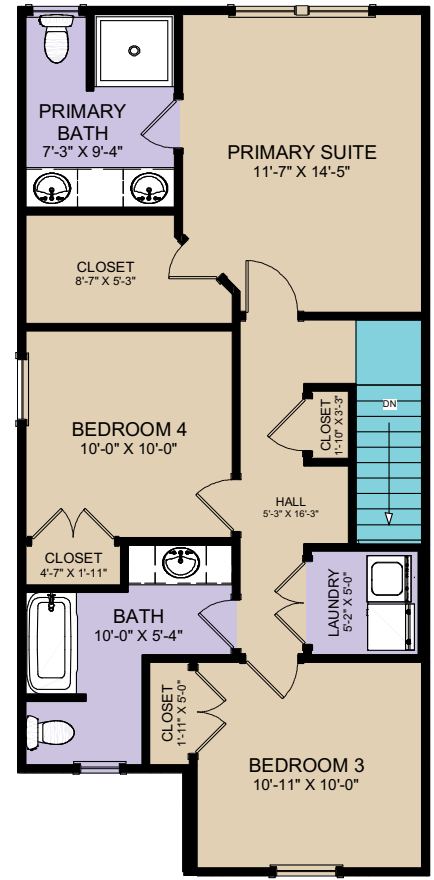
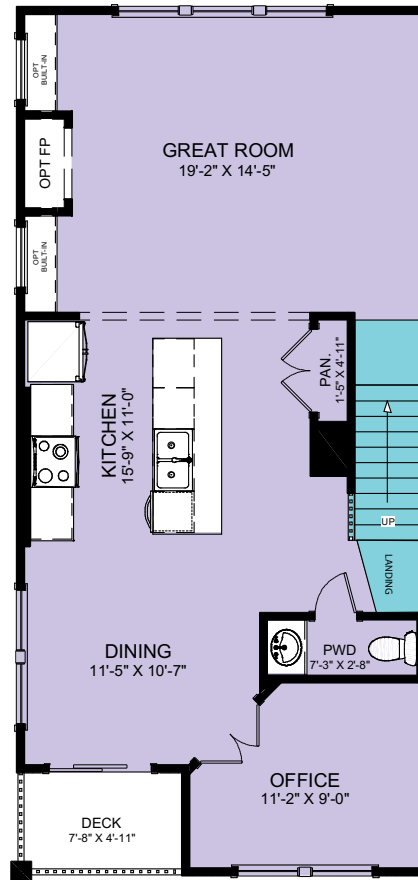
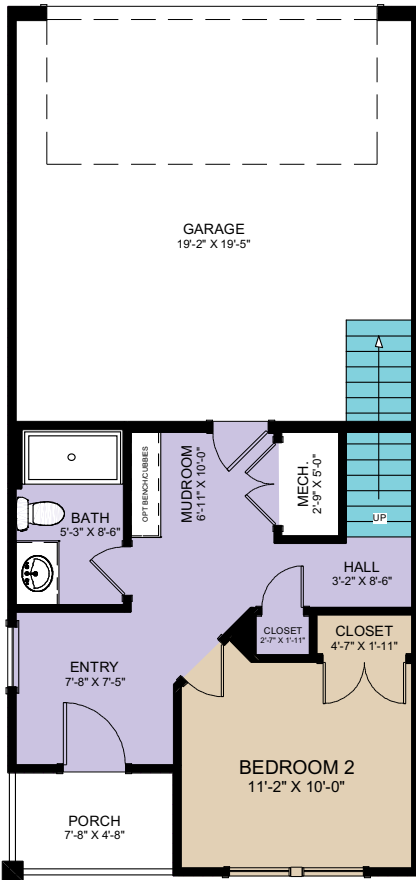
 **the Real Estate Group**SM
A Hampton Roads Original
New Homes Division

Builder reserves the right to change prices, plan components and specifications and to withdraw any plan without notice. All illustrations are artist's concepts and accuracy is not guaranteed. Room and house dimensions approximate. Extra-cost options may be shown in illustrations. Individual homes may differ from the models or from each other depending on field conditions. June/2024





REAR LOAD
BIRCH PLAN
LEFT EXTERIOR UNIT



Donna Melzer: (757) 652-0769
Email: HAVSales@HAVinc.com



www.havinc.com



CEDAR GLEN

The Villas at Greenbrier
A LUXURY CONDOMINIUM

The Spruce ELEVATION | Rear Load



Donna Melzer: (757) 652-0769
Email: HAVSales@HAVinc.com



www.havinc.com

 **the Real Estate Group**SM
A Hampton Roads Original
New Homes Division

Builder reserves the right to change prices, plan components and specifications and to withdraw any plan without notice. All illustrations are artist's concepts and accuracy is not guaranteed. Room and house dimensions approximate. Extra-cost options may be shown in illustrations. Individual homes may differ from the models or from each other depending on field conditions. June/2024



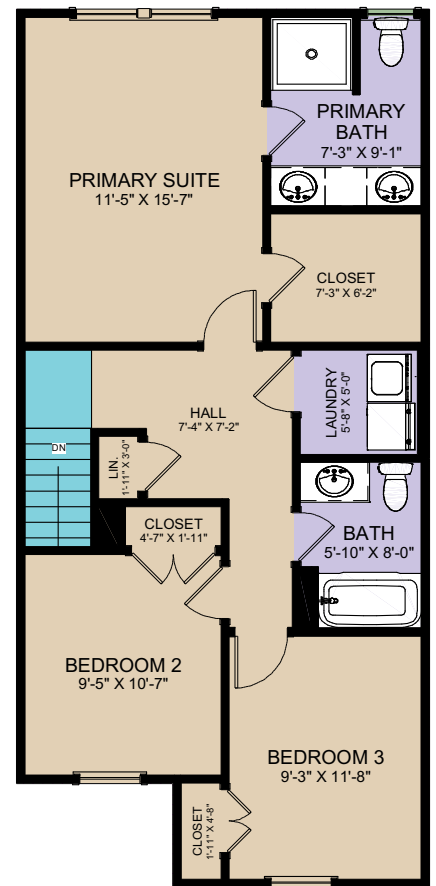
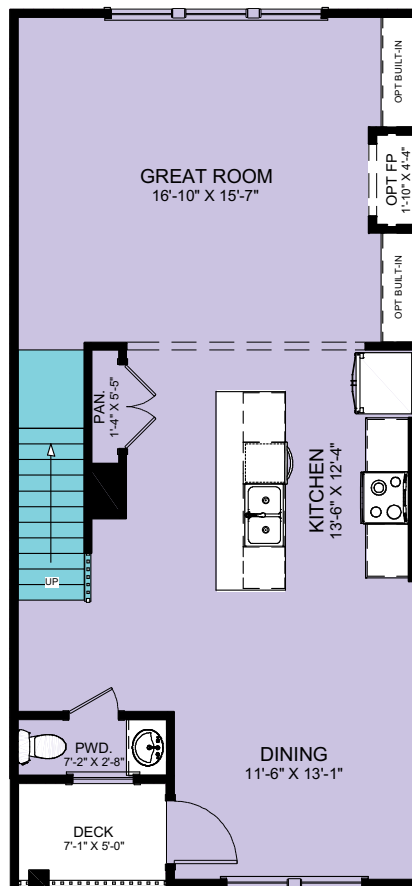
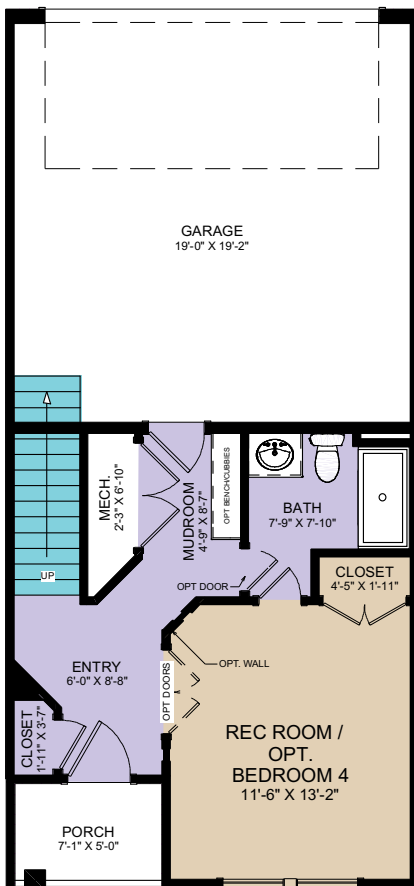
CEDAR GLEN

The Villas at Greenbrier
A LUXURY CONDOMINIUM

Spruce & Elm FLOOR PLAN | Interior Unit

REAR LOAD
SPRUCE & ELM PLANS
INTERIOR UNITS

LVP WOOD CARPET



Donna Melzer: (757) 652-0769
Email: HAVSales@HAVinc.com



Builder reserves the right to change prices, plan components and specifications and to withdraw any plan without notice. All illustrations are artist's concepts and accuracy is not guaranteed. Room and house dimensions approximate. Extra-cost options may be shown in illustrations. Individual homes may differ from the models or from each other depending on field conditions. June/2024



CEDAR GLEN

The Villas at Greenbrier
A LUXURY CONDOMINIUM

The Oak ELEVATION | Rear Load



Donna Melzer: (757) 652-0769
Email: HAVSales@HAVinc.com



www.havinc.com

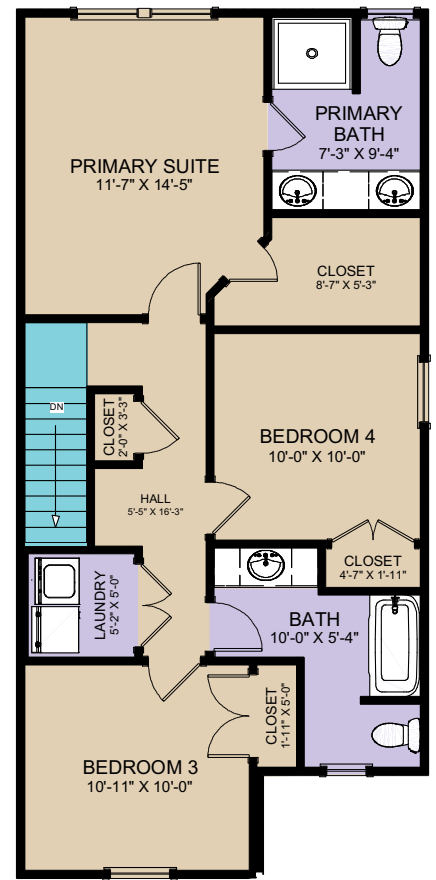
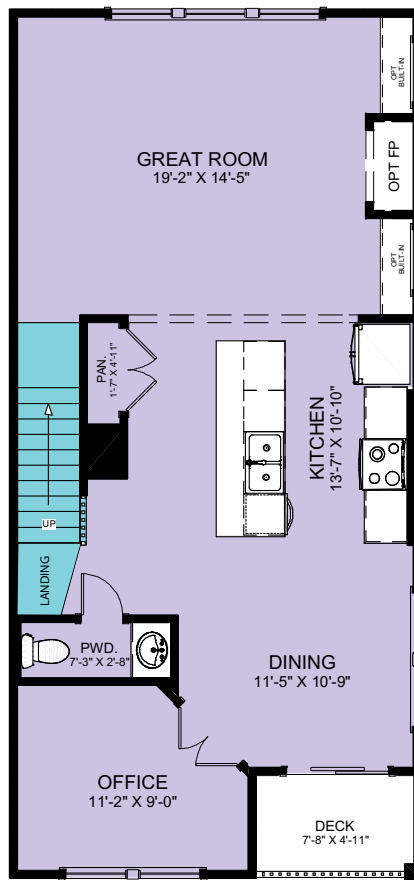
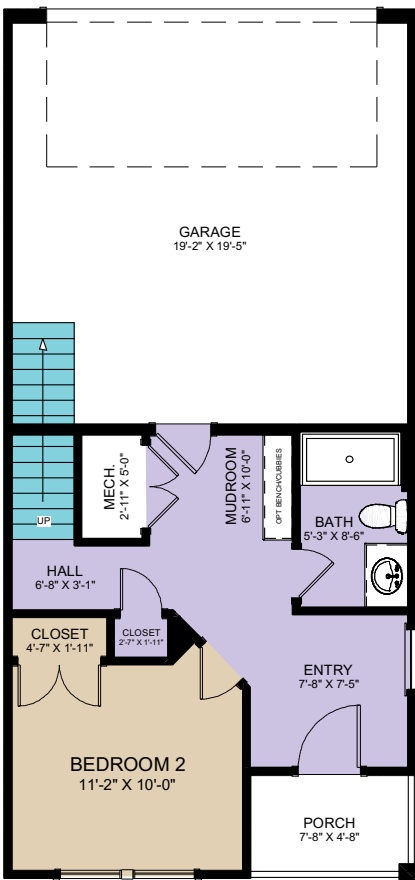
 **the Real Estate Group**SM
A Hampton Roads Original
New Homes Division

Builder reserves the right to change prices, plan components and specifications and to withdraw any plan without notice. All illustrations are artist's concepts and accuracy is not guaranteed. Room and house dimensions approximate. Extra-cost options may be shown in illustrations. Individual homes may differ from the models or from each other depending on field conditions. June/2024



REAR LOAD
OAK PLAN
RIGHT EXTERIOR UNIT

LVP WOOD CARPET



Donna Melzer: (757) 652-0769
Email: HAVSales@HAVinc.com



www.havinc.com

